

Ethics of Animal Rights.

4:00 pm - 5:00 pm W | Sturm Hall 382

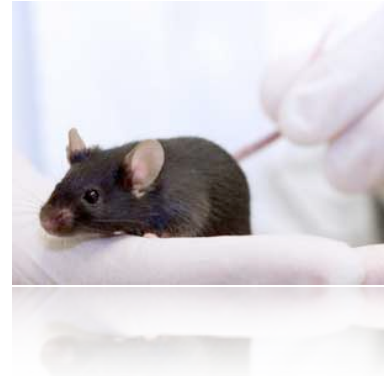
Spring Quarter 2012

Independent Study.

Thomas Nail | thomas.nail@du.edu

Office: 382 Sturm, 303-871-4917

Office Hours: 12-1pm TR



Course Description.

The goal of this independent study is to read selected course materials from Ethics (PHIL 2180) and write a 10 page research essay relating them to the ethics of animal rights.

Required Readings.

All texts are available as PDF's.

Reading Schedule.

Unit	Week	Date	Activities	Readings Due
Unit 1 Normative Ethics	Week 1	3/26		Introductions, syllabus, course readings and expectations. Writing Thinking.
		3/28		LaFollette, "The Truth in Ethical Relativism"
	Week 2	4/2		Kant, <i>Groundwork for the Metaphysics of Morals</i> , Preface, First section
		4/4		Kant, <i>Groundwork for the Metaphysics of Morals</i> , Second section 26–52
	Week 3	4/9		Mill, <i>Utilitarianism</i> , Chapters I-III
		4/11	No Class	No Class.
	Week 4	4/16		Mill, <i>Utilitarianism</i> , Chapter IV-V
		4/18		Aristotle, <i>Nicomachean Ethics</i> , Books I & II
Unit 2 Applied Ethics	Week 5	4/23		Kant, "Rational Beings Alone Have Moral Worth" Regan, "Animal Rights Human Wrongs"
		4/25		Singer, "A Utilitarian Defense of Animal Liberation"
	Week 6	4/30		Hursthouse, "Applying Virtue Ethics to Our Treatment of the Other Animals"
Unit 3 Non-Normative Ethics		5/2	First paper Due	Beauvoir, <i>Ethics of Ambiguity</i> , 7–35
	Week 7	5/7		Kittay, "The Ethics of Care, Dependence, and Disability"
		5/9		Foucault, <i>The Use of Pleasure</i> , 3–13; 25–32
Unit 4	Week 8	5/14		Spinoza, <i>Ethics</i> , Book II, 115–134

Assemblage Ethics		5/16		Deleuze, <i>Spinoza: Practical Philosophy</i> , 17–29 Deleuze and Guattari, <i>A Thousand Plateaus</i> , 256–265.
	Week 9	5/21		Nietzsche, <i>The Genealogy of Morals</i> , First Essay.
		5/23		Nietzsche, <i>The Will to Power</i> , 338–358
	Week 10	5/28		Deleuze, <i>Nietzsche and Philosophy</i> , 39–60
		5/30		Deleuze, <i>Nietzsche and Philosophy</i> , 61–79
		6/6	Final Essay due.	